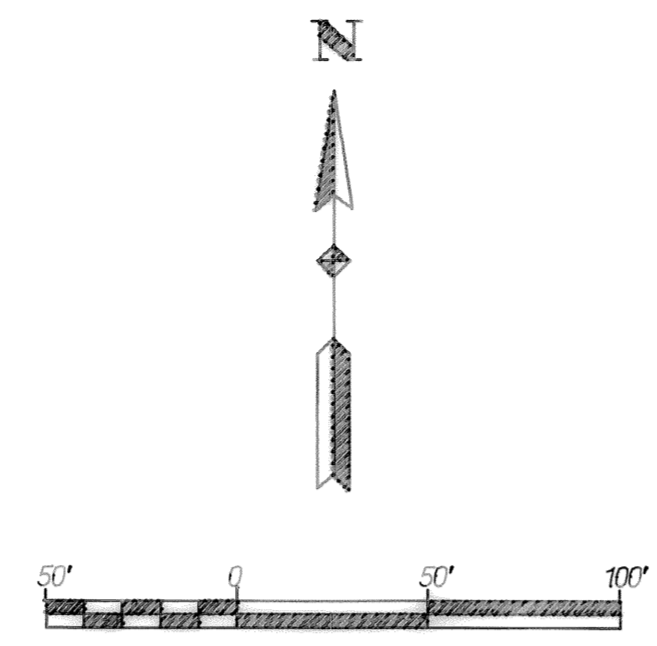
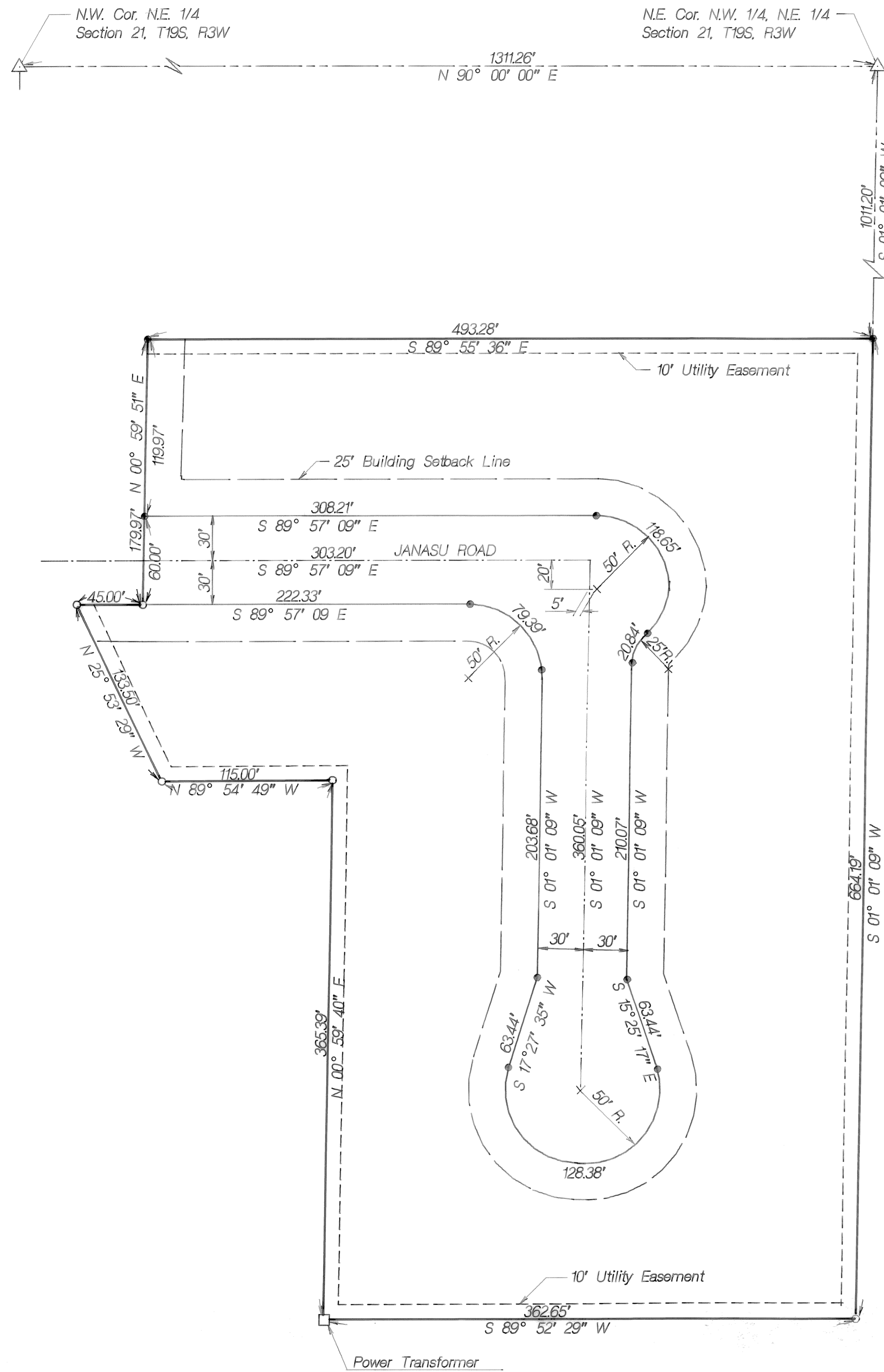


# COUNTRYSIDE PLACE

AN ADDITION TO THE CITY OF  
McPHERSON, KANSAS



**SIDEWALK**

Sidewalk shall be installed in back of the curb on the west side of the street in accordance with City Specifications and Grade. This sidewalk construction shall be completed concurrent with the housing construction on the above mentioned "Country-side Place" plat.

**LEGEND**

- Iron Bars Found in Place
- Iron Bars Set this Survey
- △ Section, 1/4 Section & 1/16 Section Corner
- Boundary Line
- - - Easement Line
- - - Section Line
- Building Setback Line
- Lot Line
- - - Street Centerline

**SURVEYOR'S CERTIFICATE AND DESCRIPTION:**

I, the undersigned, licensed professional engineer and/or surveyor of the State of Kansas, do hereby certify that the following described tract of land was surveyed on August 3, 1984 and the accompanying final plat prepared and that all monuments shown herein actually exist and their positions are correctly shown to the best of my knowledge and belief:

A tract of land situated in the N.W. 1/4 of the N.E. 1/4 of Section 21, Township 19 South, Range 3 West of the Sixth Principal Meridian, McPherson County, Kansas and being more particularly described as follows: Commencing at the Northwest Corner of the Northeast Quarter (NE 1/4) of said Section 21; thence on an assumed bearing of N 90° E along the north section line of said section 21, a distance of 1311.26 feet to the N.E. corner of the Northwest Quarter (NW 1/4) of the Northeast Quarter (NE 1/4) of said section 21; thence S 01° 01' 09" W, a distance of 1011.20 feet to the POINT OF BEGINNING; thence continuing S 01° 01' 09" W and along the east line of the N.W. 1/4 of the N.E. 1/4 of said section 21, a distance of 664.19 feet; thence S 89° 52' 29" W, a distance of 362.65 feet; thence N 00° 59' 40" E, a distance of 365.39 feet; thence N 89° 54' 49" W, a distance of 115.00 feet; thence N 25° 53' 29" W, a distance of 133.50 feet; thence S 89° 57' 09" E, a distance of 45.00 feet; thence N 00° 59' 51" E, a distance of 179.97 feet; thence S 89° 55' 36" E, a distance of 493.28 feet to the POINT OF BEGINNING.

The above described tract of land contains 6.475 acres, more or less.

Signed August 3, 1984

Kenneth J. Lusk  
Engineer's and/or Surveyor's  
Name and License Number



**OWNER'S CERTIFICATION AND DEDICATION:**

STATE OF KANSAS } SS  
COUNTY OF McPHERSON

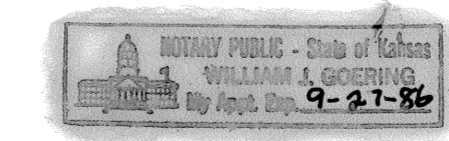
This is to certify that the undersigned owners of the land described in the Surveyor's Certificate, have caused the same to be surveyed and subdivided on the accompanying plat into blocks, streets and other public ways in accordance with Kansas Statutes KSA 58-3101 et. seq. for condominium development under the name of "COUNTRYSIDE PLACE": an addition to the City of McPherson, McPherson County, Kansas. that all highways, streets, alleys, easements and public grounds as denoted on the plat are hereby dedicated to and for the use of the public for the purposes of constructing, operating, maintaining and repairing public improvements; and further that the land contained herein is held and shall be conveyed subject to any applicable restrictions, reservations, and covenants now on file or hereafter filed in the Office of the Register of Deeds of McPherson County, Kansas.

Robert J. Perrin October 5, 1984  
Date  
Steve Perrin October 5, 1984  
Date

**NOTARY CERTIFICATE:**

STATE OF KANSAS } SS  
CITY OF McPHERSON

The foregoing instrument was acknowledged before me this 6 day of October, 1984, by William J. Perry, Notary Public  
My Commission Expires: \_\_\_\_\_



**CITY ATTORNEY'S CERTIFICATE:**

STATE OF KANSAS } SS  
CITY OF McPHERSON

This plat is approved pursuant to the provisions of K.S.A. 12-401.  
Date Signed: October 8, 1984. William J. Perry City Attorney F.O. 2013

**REGISTER OF DEEDS CERTIFICATE:**

State of Kansas, McPherson Co., S. 777 X  
This instrument was filed for record on the 17 day of March, 1985 at 2:22 o'clock, P.M. and duly recorded in book 11 on page 27  
Richard Paul  
Register of Deeds



**COUNTY CLERK AND CITY CLERK CERTIFICATE:**

STATE OF KANSAS } SS  
COUNTY OF McPHERSON  
CITY OF McPHERSON

We, the undersigned, County Clerk of McPherson County, Kansas, and City Clerk of the City of McPherson, Kansas, within our respective jurisdictions, do hereby certify that at the date of this certificate, all currently due and owing taxes and special assessments of any kind assessed against any of the land included in this plat, have been paid.

Date Signed: October 10, 1984 Date Signed: October 7, 1984  
Margaret Bryan William J. Perry  
County Clerk City Clerk



**CERTIFICATE AS TO CITY PUBLIC IMPROVEMENTS:**

STATE OF KANSAS } SS  
CITY OF McPHERSON

We, the undersigned, do hereby certify that the required guarantees are posted with City for the completion of the improvements covering all streets, storm sewers, sanitary sewer system, and domestic water supply and distribution system pertaining to the subject plat and not under other Federal, State, or County completion obligations; which are based on a licensed engineer's plans and specifications; and which are approved by all public authorities having jurisdiction.

Date Signed: Oct 8, 1984 Date Signed: 10/9/84  
Gary A. Slay Kennard D. Solt  
City Engineer, Asst. General Manager of  
City of McPherson, Kansas Board of Public Utilities,  
City of McPherson, Kansas

**PLANNING COMMISSION CERTIFICATE:**

STATE OF KANSAS } SS  
CITY OF McPHERSON

This plat was approved by the McPherson City Planning Commission on August 28, 1984, and was recommended for approval by the Governing Body of the City of McPherson, Kansas.

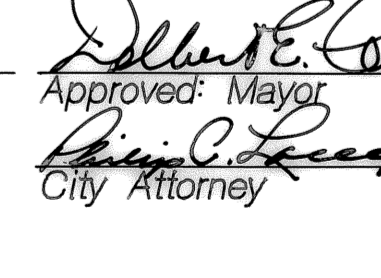
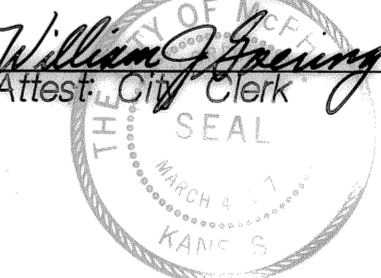
Signed August 29, 1984 William W. Hood Chairman  
Attest: Helmut J. Torum Secretary

**GOVERNING BODY CERTIFICATE:**

STATE OF KANSAS } SS  
CITY OF McPHERSON

This plat approved and all dedications shown hereon, if any, are hereby accepted by the Governing Body of the City of McPherson, Kansas, on October 8, 1984.

William J. Perry William E. Corbett  
Attest: City Clerk Approved: Mayor  
William J. Perry William E. Corbett  
City Attorney City Attorney



**COUNTY COMMISSIONER'S CERTIFICATE:**

STATE OF KANSAS } SS  
COUNTY OF McPHERSON

The dedications shown on this plat are hereby accepted by the Board of County Commissioners, McPherson County, Kansas on Oct. 10, 1984

Entered on Transfer Record on October 10, 1984  
Margaret Bryan William E. Corbett  
County Clerk Commission Chairman  
Attest: County Clerk



Conservation & Reclamation 8-27-85 Plat 17-340 Page 6-35